



TIIG

INJURY SURVEILLANCE IN THE NORTH WEST OF ENGLAND

University Hospitals of Morecombe Bay NHS Trust Monthly Bulletin: April 2006 to March 2007

This bulletin provides a breakdown of all traumaⁱ attendances at University Hospitals of Morecombe Bay NHS Trust accident and emergency departments (AEDs)ⁱⁱ between April 2006 and March 2007. Figure 1 illustrates the number of trauma attendances by month of attendance, these peaked in July (n=4,459), with December (n=2,897) having the fewest.

Figure 1: Total number of trauma attendances by month, April 2006 to March 2007

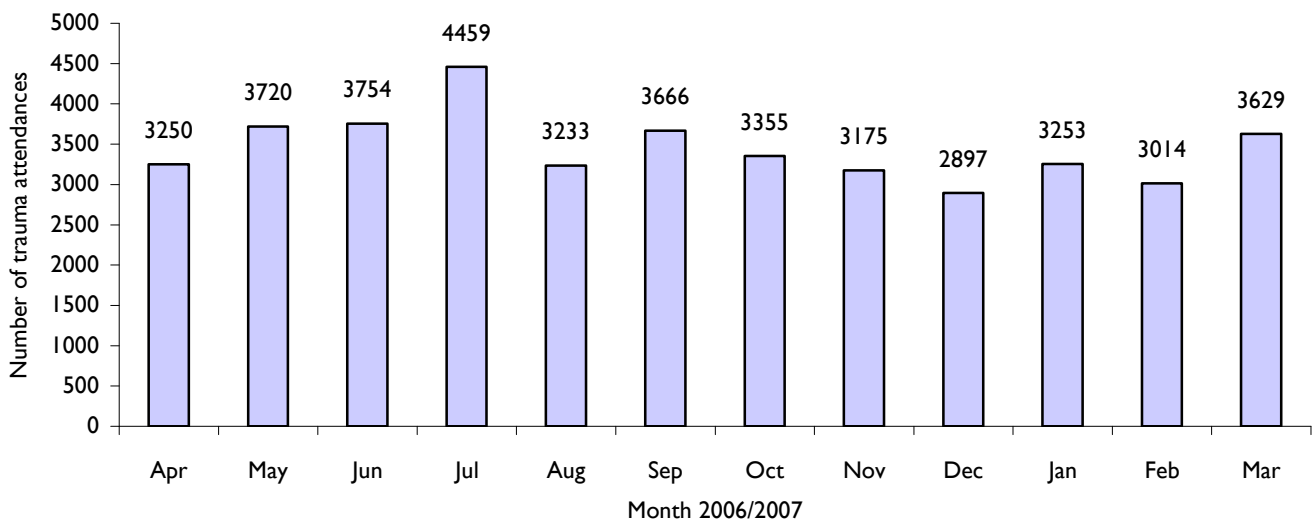


Figure 2 illustrates trauma attendances by gender. For all months there were more male (57%) trauma attendances than female presenting at University Hospitals of Morecombe Bay NHS Trust AEDs.

Figure 2: Gender of trauma attendances by month, April 2006 to March 2007

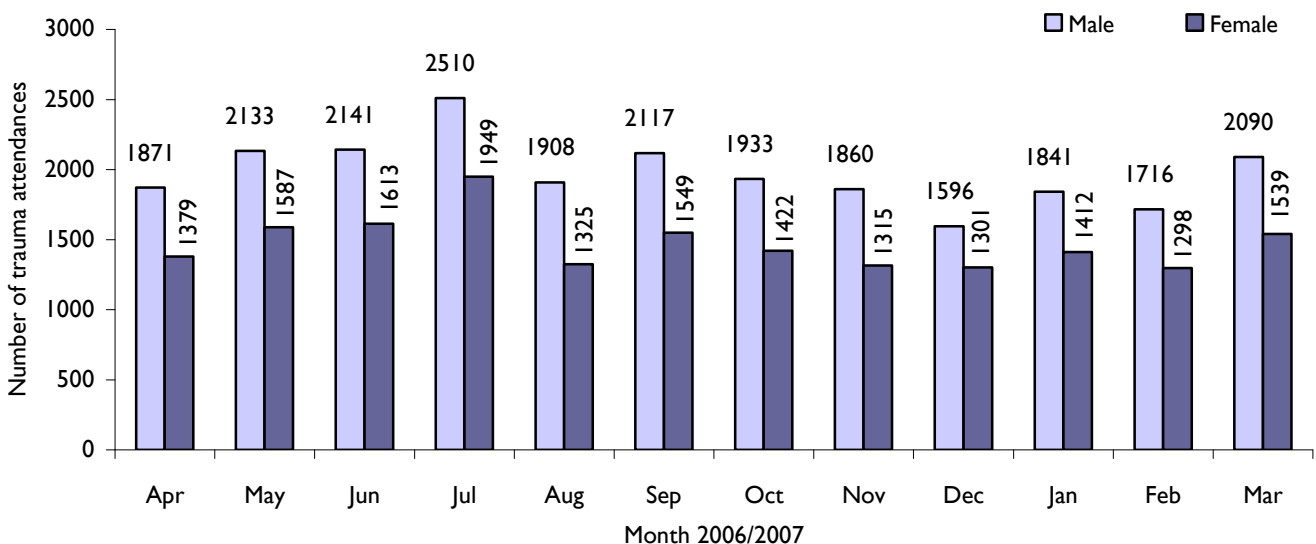


Figure 3 presents the age group of trauma attendances. Across the whole year almost third (31%) of trauma attendances were aged 30 – 59, while 29% were aged 15 – 29 years.

Figure 3: Age group of trauma attendances by month, April 2006 to March 2007

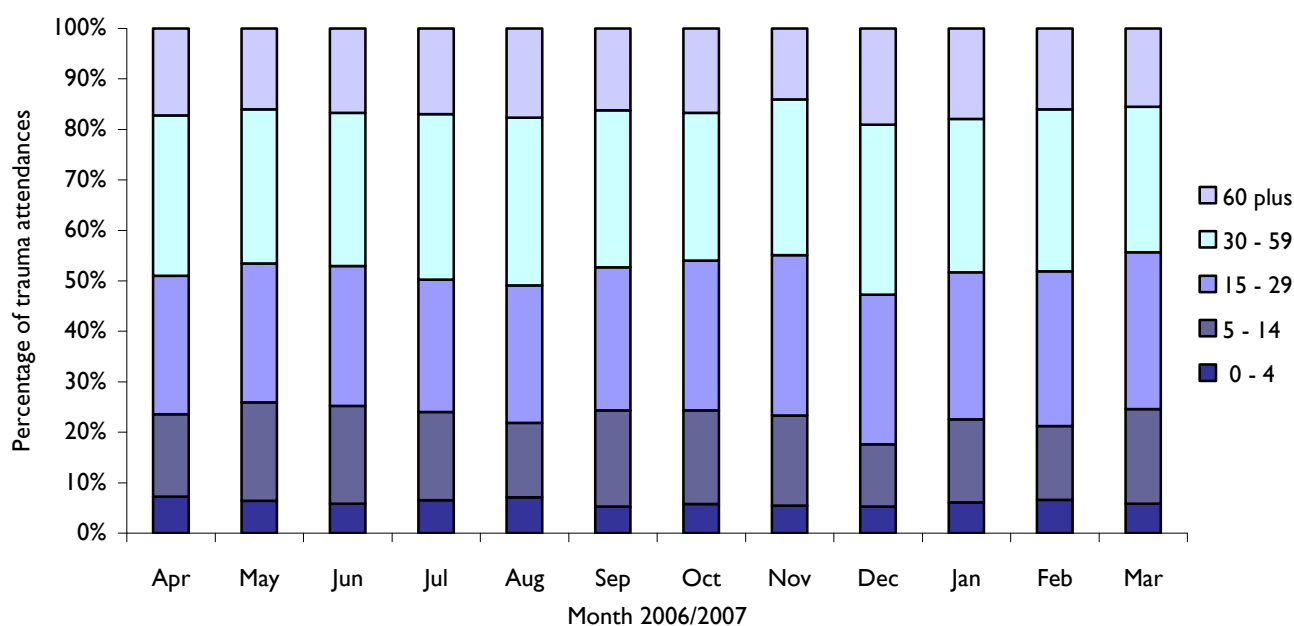


Table 1 details the injury group of trauma attendances. The most common cause of injury was by 'other' accident, (79%). Of those attendances where an injury group was specified 52% were sports injuries and 30% road traffic accidents.

Table 1: Trauma attendances by injury group, April 2006 to March 2007ⁱⁱⁱ

Injury group*	Apr	May	Jun	Jul	Aug	Sep	Oct	Nov	Dec	Jan	Feb	Mar	Total	%
Other accident	2528	2972	3036	3644	2535	2862	2561	2415	2284	2561	2349	2803	32550	79
Sports injury	358	399	415	396	329	459	419	385	236	348	364	469	4577	11
Road traffic accident	224	257	186	272	238	225	218	234	240	213	166	210	2683	6
Assault	73	59	76	94	87	65	91	88	89	82	87	87	978	2
Deliberate self-harm	67	33	41	53	44	55	64	44	48	49	48	60	606	1
Total trauma	3250	3720	3754	4459	3233	3666	3355	3175	2897	3253	3014	3629	41405	100

*Please note firework injuries have been excluded because of low numbers. However, total trauma includes firework injuries.

Table 2 illustrates the source of referral for patients presenting with trauma injuries. The majority (74%) of trauma attendees self-referred.

Table 2: Trauma attendances by source of referral, April 2006 to March 2007

Source of referral	Apr	May	Jun	Jul	Aug	Sep	Oct	Nov	Dec	Jan	Feb	Mar	Total	%
Self-referral	2429	2706	2779	3389	2433	2712	2449	2315	2142	2416	2258	2740	30768	74
Emergency services	357	418	403	468	378	436	391	368	386	358	387	414	4764	12
Other	382	471	429	428	288	370	361	310	246	327	229	275	4116	10
GP	37	49	61	73	66	74	50	72	60	68	68	79	757	2
Work	14	22	32	39	41	26	48	41	17	26	24	45	375	1
Educational establishment	<5	28	27	33	<5	26	34	50	19	32	20	43	318	1
Police	23	24	19	24	24	18	18	17	24	20	22	26	259	1
Unknown	<5	<5	<5	<5	<5	<5	<5	<5	<5	<5	5	<5	24	0
Health care provider: same or other	<5	<5	<5	<5	<5	<5	<5	<5	<5	<5	<5	<5	16	0
General dental practitioner	<5	<5	<5	<5	<5	<5	<5	<5	<5	<5	<5	<5	6	0
Community dental service	<5	<5	<5	<5	<5	<5	<5	<5	<5	<5	<5	<5	<5	0
Local authority social services	<5	<5	<5	<5	<5	<5	<5	<5	<5	<5	<5	<5	<5	0
Total	3250	3720	3754	4459	3233	3666	3355	3175	2897	3253	3014	3629	41405	100

Table 3 presents trauma attendances by location of incident. Three in ten of all trauma attendances occurred in the home (31%) and 29% occurred in a public place.

Table 3: Trauma attendances by location of incident, April 2006 to March 2007

Location	Apr	May	Jun	Jul	Aug	Sep	Oct	Nov	Dec	Jan	Feb	Mar	Total	%
Home	1110	1223	1207	1424	978	1125	990	887	996	1054	902	1039	12935	31
Public place	1114	1089	1117	1381	1185	1063	949	857	728	814	840	956	12093	29
Other	572	739	784	932	685	818	760	623	708	794	738	904	9057	22
Work	251	331	338	406	295	342	360	397	265	306	296	343	3930	9
Educational establishment	94	270	246	177	8	270	247	369	155	254	204	333	2627	6
Unknown	109	68	62	139	82	48	49	42	45	31	34	54	763	2
Total	3250	3720	3754	4459	3233	3666	3355	3175	2897	3253	3014	3629	41405	100

Table 4 shows the disposal method of trauma attendances. Over half of all (44%) attendees were discharged requiring no follow up treatment.

Table 4: Disposal method of all trauma attendances, April 2006 to March 2007

Table 4: Disposal	Apr	May	Jun	Jul	Aug	Sep	Oct	Nov	Dec	Jan	Feb	Mar	Total	%
Discharged – no follow-up	1528	1768	1605	1941	1343	1565	1603	1487	1248	1397	1337	1591	18413	44
Discharge - follow up care by GP	638	795	927	1069	887	903	773	791	705	823	711	905	9927	24
Referred to fracture clinic	348	411	460	540	356	464	390	350	331	386	368	447	4851	12
Admitted to hospital bed	272	291	315	359	294	309	270	253	258	297	269	280	3467	8
Referred to A&E clinic	134	124	128	191	116	158	116	114	139	143	116	155	1634	4
Left - before being treated	117	110	127	106	74	87	69	55	74	78	61	80	1038	3
Referred to out-patient clinic	77	61	55	61	47	56	43	52	64	59	53	65	693	2
Referred to other health care provider	23	37	49	56	39	44	52	38	41	34	47	51	511	1
Other	58	70	44	94	31	18	<10	<10	11	<10	14	16	374	1
Transfer to other health care provider	41	29	28	33	34	48	22	20	18	17	24	26	340	1
Left - refused treatment	10	20	12	9	12	10	9	10	6	10	11	11	130	0
Patient died in department	<5	<5	<5	<5	<5	<5	<5	<5	<5	<5	<5	<5	24	0
Not specified	<5	<5	<5	<5	<5	<5	<5	<5	<5	<5	<5	<5	<5	0
Restore to ward	<5	<5	<5	<5	<5	<5	<5	<5	<5	<5	<5	<5	<5	0
Total	3250	3720	3754	4459	3233	3666	3355	3175	2897	3253	3014	3629	41405	100

Published July 2009
 Dan J Hungerford (TIIG Analyst)
 Centre for Public Health, Liverpool John Moores University, 5th Floor, Kingsway House, Liverpool, L3 2AJ
 Tel: 0151 231 8728 Email: d.j.hungerford@ljmu.ac.uk
 Website: www.tiig.info (please note data requests should be made through the website)

ⁱ Trauma refers to all AED attendances presenting as a result of an intentional/unintentional injury.

ⁱⁱ Westmorland General Hospital AED, Furness General Hospital AED, and Royal Lancaster Infirmary AED

ⁱⁱⁱ Please note that all numbers less than five have been suppressed in line with patient confidentiality and if there is only one number <5 in a category then two numbers will be suppressed at the next level (e.g. <10) in order to prevent back calculations from totals.